

**BOISE CENTRE  
WEST REFRESH  
PHASE 1**



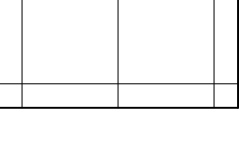
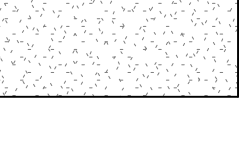



**BOISE CENTRE**

CONSULTANTS:

**KEYNOTES**

1. NO CEILING WORK THIS ROOM
2. FOLDING OVERHEAD DOORS TO REMAIN WITH CURRENT FINISHES.
3. PAINT COLUMN ABOVE VESTIBULE (P4).
4. CONTINUE ACCENT PAINT (P4) BEHIND ART INSTALLATION "FLOW".
5. PAINT ALL FACES OF EXISTING SOFFIT (P1).
6. PAINT UNDERSIDE OF SOFFIT (P1) AND VERTICAL FACE OF SOFFIT INSIDE ROOM 130 TO RECEIVE WALLCOVERING (WC2).
7. PAINT ALL FACES OF EXISTING SOFFIT (P3)

**CEILING LEGEND**

-  NOT IN SCOPE
-  EXISTING CEILING TO REMAIN
-  EXISTING LAY-IN ACOUSTICAL CEILING. NOT IN SCOPE
-  EXISTING GYPSUM BOARD CEILING OR SOFFIT - PAINTED (P1)
-  EXISTING GYPSUM BOARD CEILING OR SOFFIT - PAINTED (P3)
-  EXISTING GYPSUM BOARD CEILING OR SOFFIT - PAINTED (P4)
-  ACCENT PAINT (099123)

**GENERAL CEILING NOTES**

1. SEE ROOM FINISH SCHEDULE FOR ADDITIONAL FINISH INFORMATION.
2. PAINT ALL ACCESS PANELS AND PAINTABLE HVAC REGISTERS IN GYP. CEILINGS WITHIN AREA OF WORK.
3. GYPSUM CEILINGS ARE TO BE PAINTED (P1) U.O.N.
4. DO NOT PAINT LIGHT FIXTURES, SPEAKERS, FIRE SAFETY FIXTURES, OR EMERGENCY FIXTURES IN GYPSUM CEILINGS.
5. ALL SUSPENDED CEILINGS ARE TO REMAIN. PROTECT DURING CONSTRUCTION. NOTIFY OWNER IF ANY DAMAGE OCCURS AND COORDINATE REPLACEMENT OF TILES AND/OR GRID AS NEEDED.

MARK	DATE	DESCRIPTION
1	7/16/2025	Amendment 01

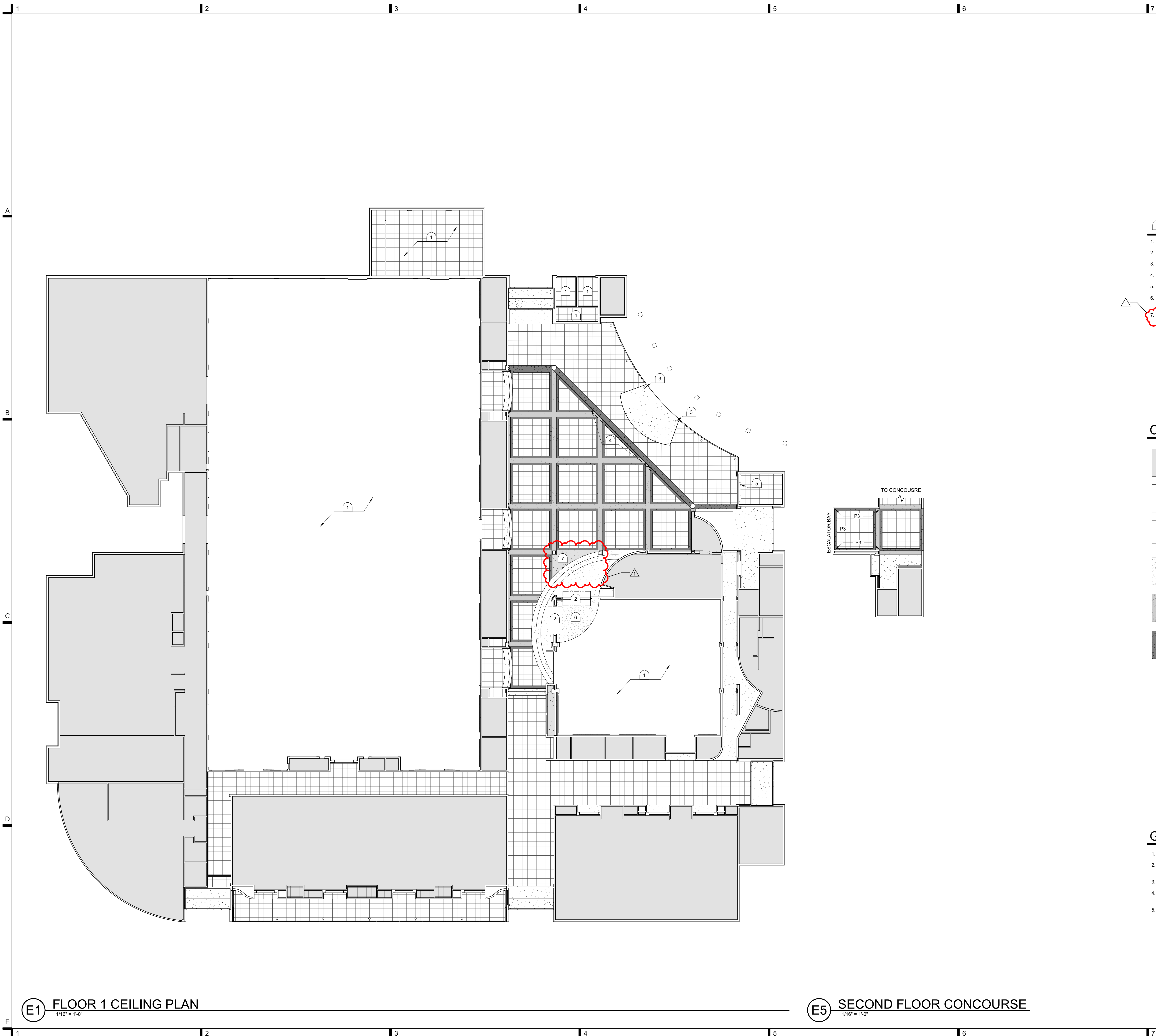
JOB NO.: 25009.01  
DATE: 07/16/2025  
DRAWN BY: JBAV  
CHECKED BY: SB

PHASE: CONSTRUCTION  
100% DOCUMENTS

**REFLECTED  
CEILING PLANS**

SHEET NO.

**A2.3**



**E1 FLOOR 1 CEILING PLAN**  
1/16" = 1'-0"

**E5 SECOND FLOOR CONCOURSE**  
1/16" = 1'-0"

**CONDOC**

- 096513.A RESILIENT BASE.
- 097200.A WALL COVERING.
- 099123.A INTERIOR PAINT.
- 102600.K CORNER GUARDS.

**LOMBARD  
CONRAD  
ARCHITECTS**

ARCHITECTURE | PLANNING  
INTERIOR DESIGN

472 W. Washington St. | Boise, ID 83702  
P: 208.344.6777 | F: 208.344.6702

COPYRIGHT All rights reserved. Reproduction or use in any form  
without written permission of LOMBARD CONRAD ARCHITECTS, INC.  
is strictly prohibited and subject to criminal prosecution.

STAMP:

**KEYNOTES**

1. TERMINATE WALLCOVERING AT INSIDE CORNER.
2. EXISTING WRAPPED PANELS TO REMAIN. KEEP CLEAN AND PROTECT DURING CONSTRUCTION.
3. PAINT OPENING FRAME (P2).
4. NEW 32" DIGITAL SIGNBOARDS TO BE OWNER PROVIDED AND CONTRACTOR INSTALLED. FINISH NEWLY ENLARGED OPENING WITH WALL COVERING AS SCHEDULED PRIOR TO SIGNBOARD INSTALLATION. CONNECT SIGNBOARDS TO EXISTING POWER AND DATA.
5. UNDERSIDE OF ESCALATOR. PANELS ARE REMOVABLE BUT MUST BE REMOVED IN SEQUENCE. COORDINATE WITH OWNER.

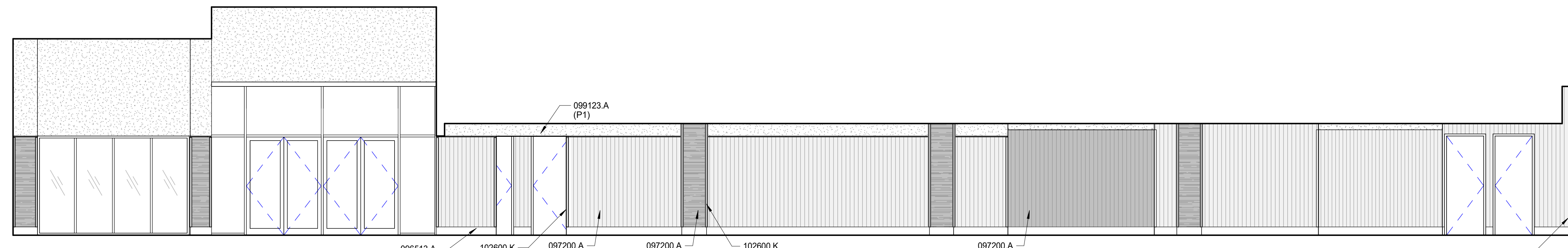
**LEGEND**

- EXISTING TO REMAIN
- P1 : GENERAL WALL COLOR (WHITE) - ALSO ABOVE WALL COVERING, TYP.
- P3 : MID-TONE CEILING ACCENT
- P4 : DARKER WALL ACCENT/CEILING ACCENT/ COLUMNS
- WC1
- WC2
- WC4

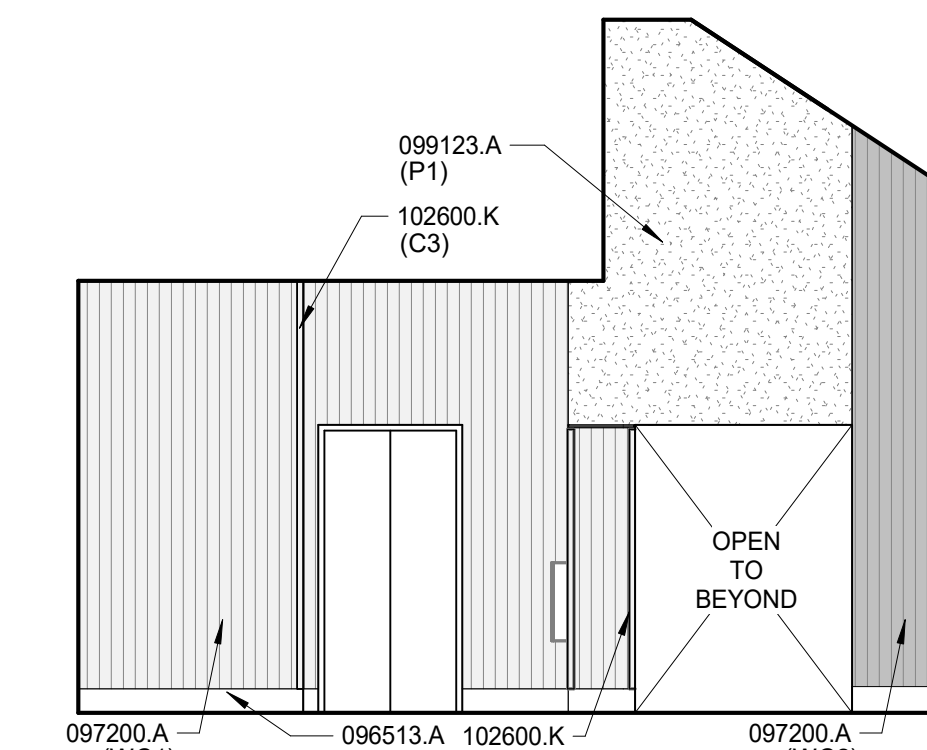
**BOISE CENTRE  
WEST REFRESH  
PHASE 1**

**BOISE CENTRE**

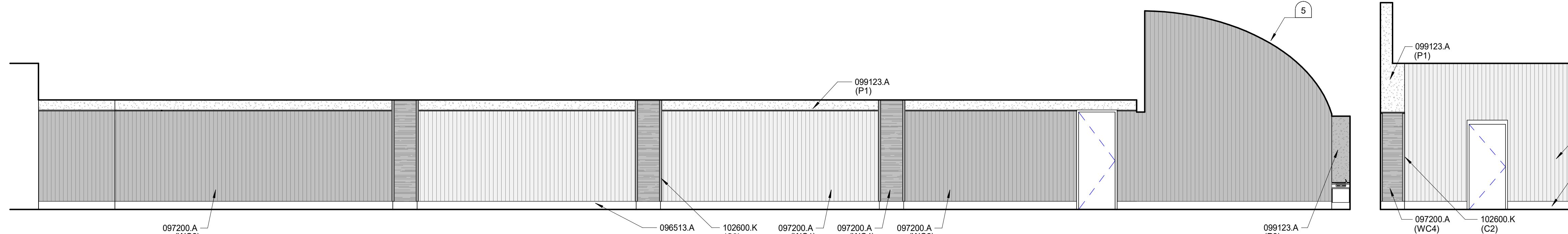
CONSULTANTS:



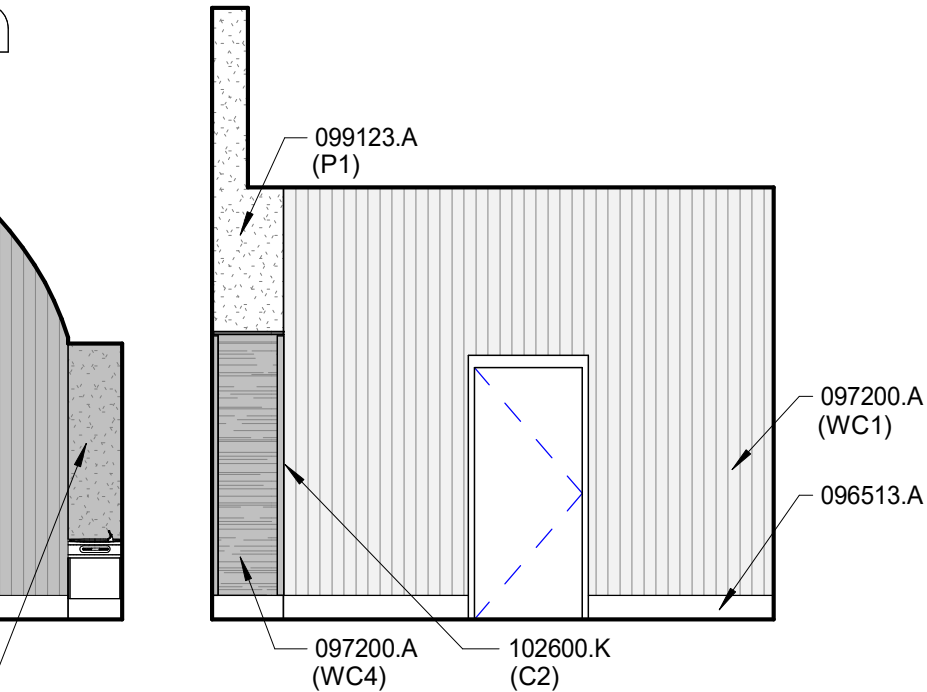
**A1 GREENBELT HALL - E**  
3/16" = 1'-0"



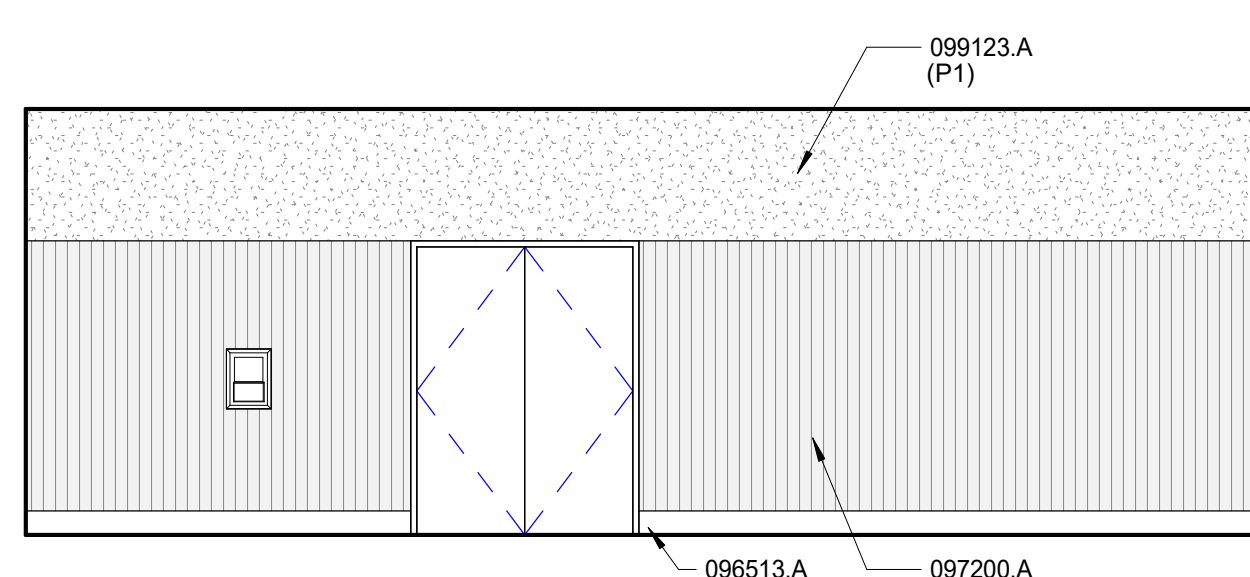
**A6 GREENBELT HALL - S**  
3/16" = 1'-0"



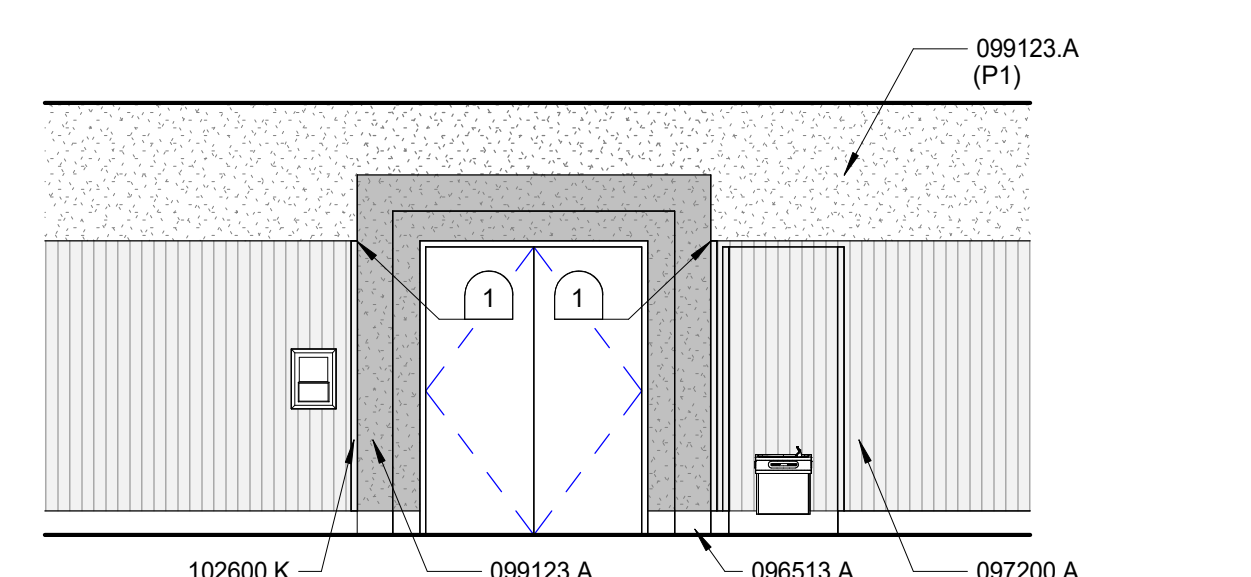
**B1 GREENBELT HALL - W**  
3/16" = 1'-0"



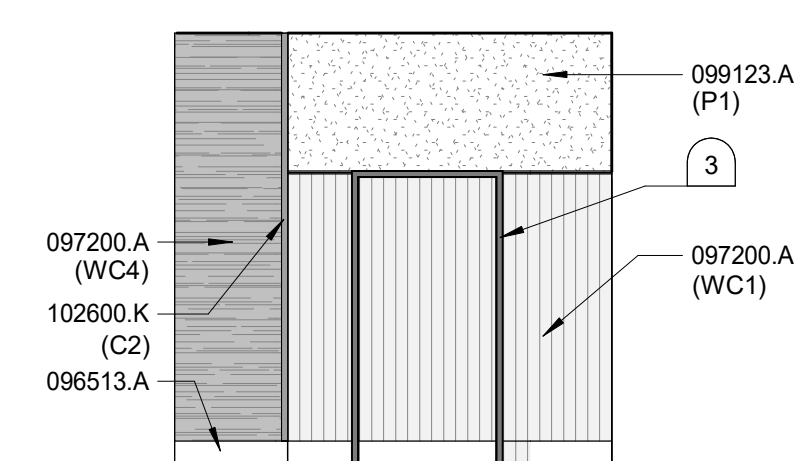
**B5 GREENBELT HALL - N**  
3/16" = 1'-0"



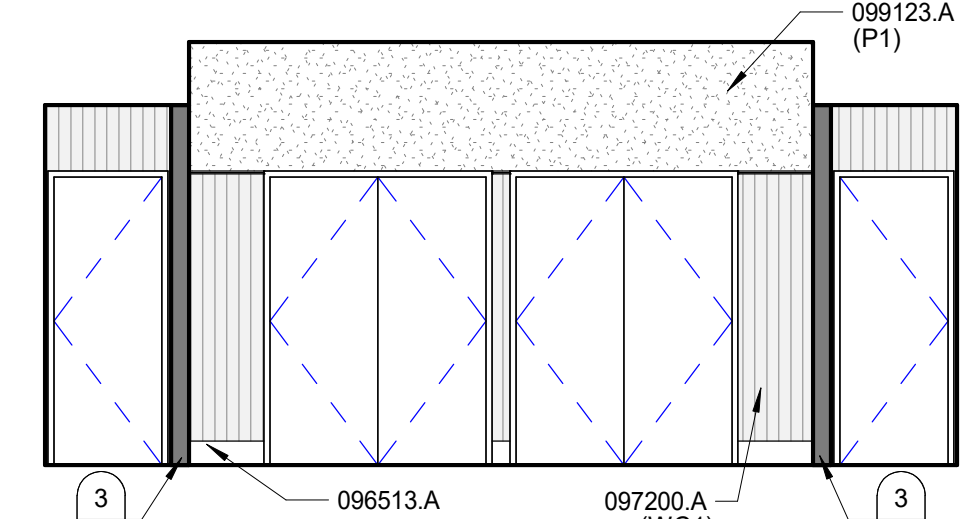
**C1 HALL 112 - S**  
3/16" = 1'-0" (TYPICAL)



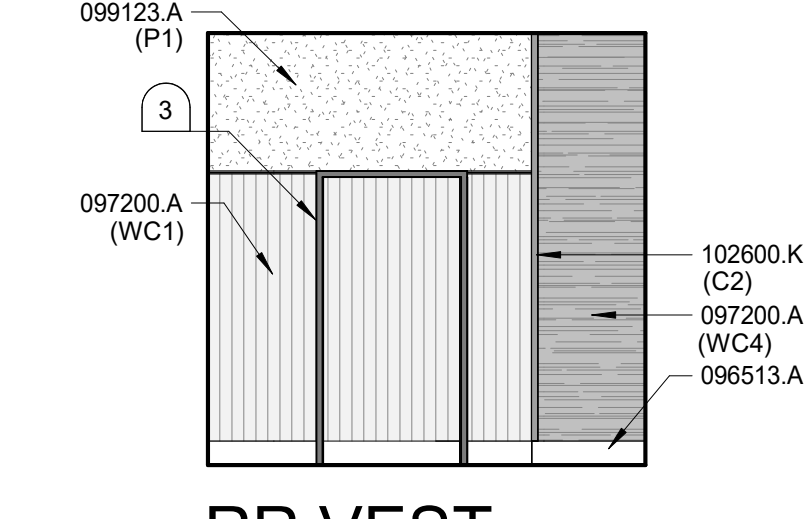
**C2 HALL 116 - S**  
3/16" = 1'-0" (TYPICAL)



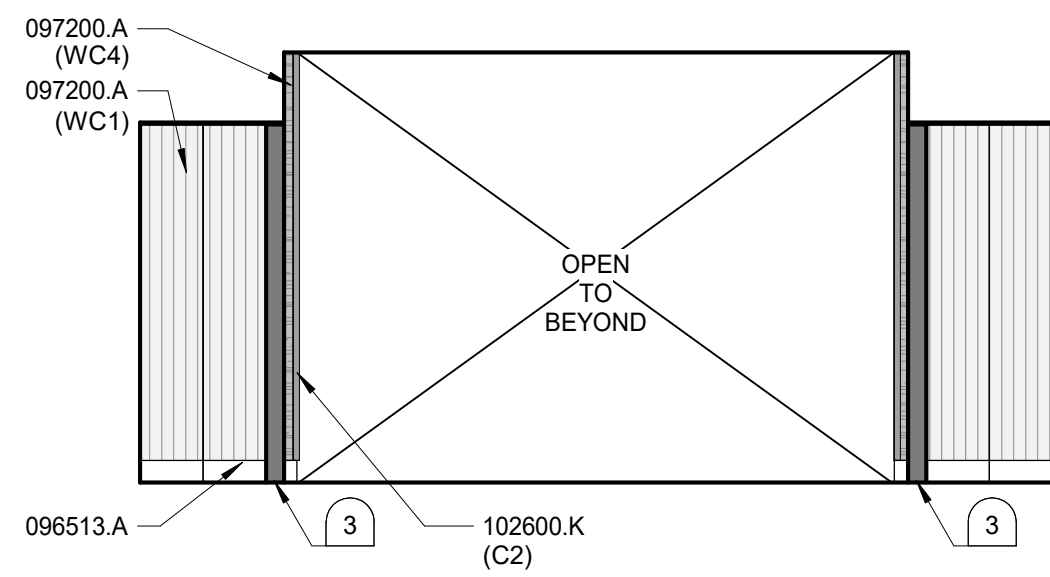
**C4 RR VEST.  
119A + 119C - S**  
3/16" = 1'-0" (TYPICAL)



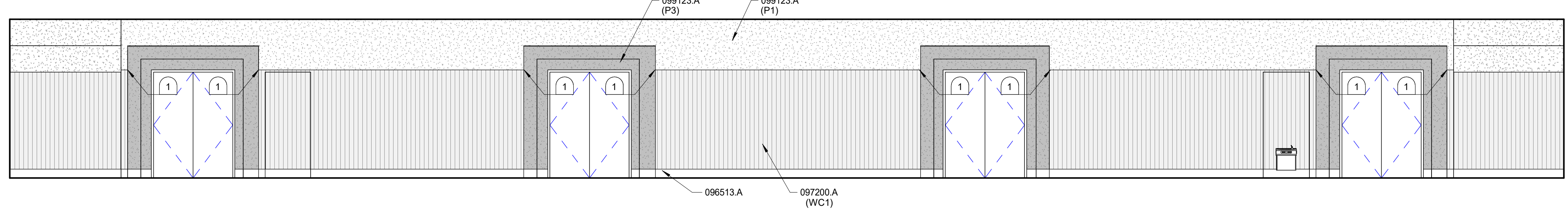
**C5 RR VEST. 119A + 119C - W**  
3/16" = 1'-0" (TYPICAL)



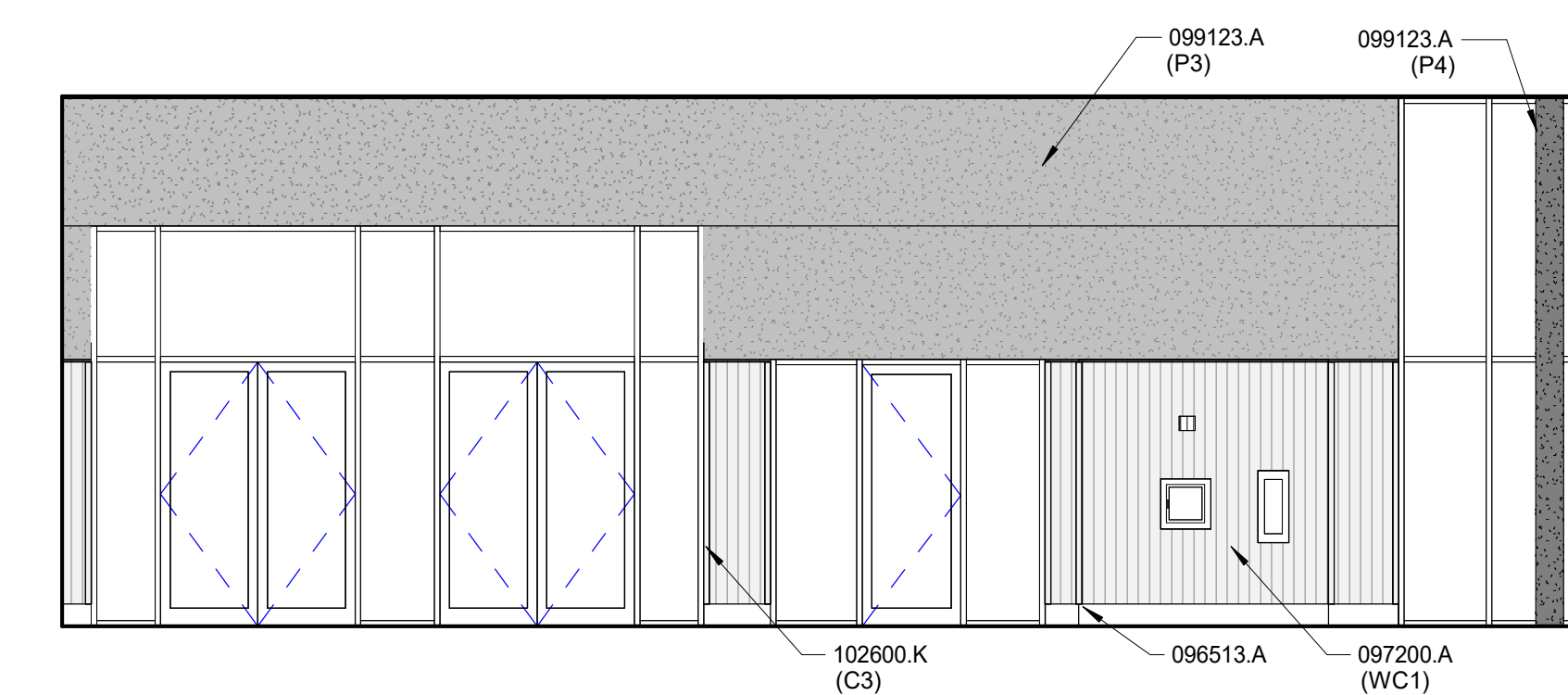
**C6 RR VEST.  
119A + 119C - N**  
3/16" = 1'-0" (TYPICAL)



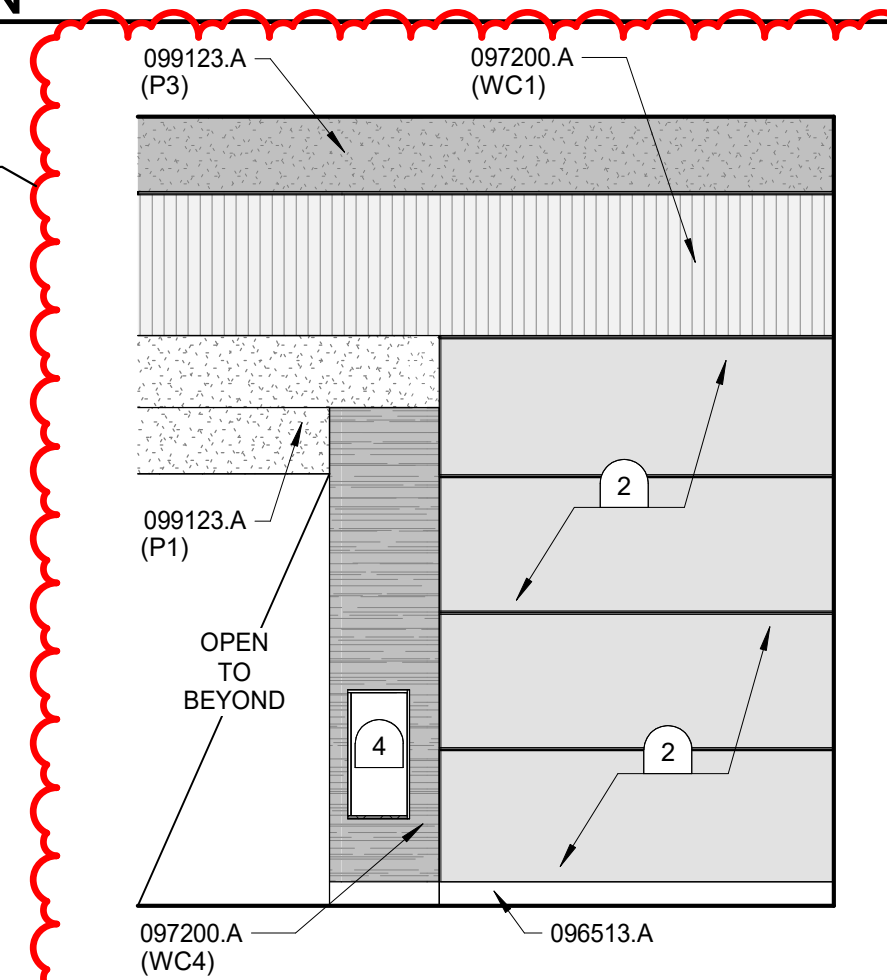
**D1 RR VEST. 119A + 119C - E**  
3/16" = 1'-0" (TYPICAL)



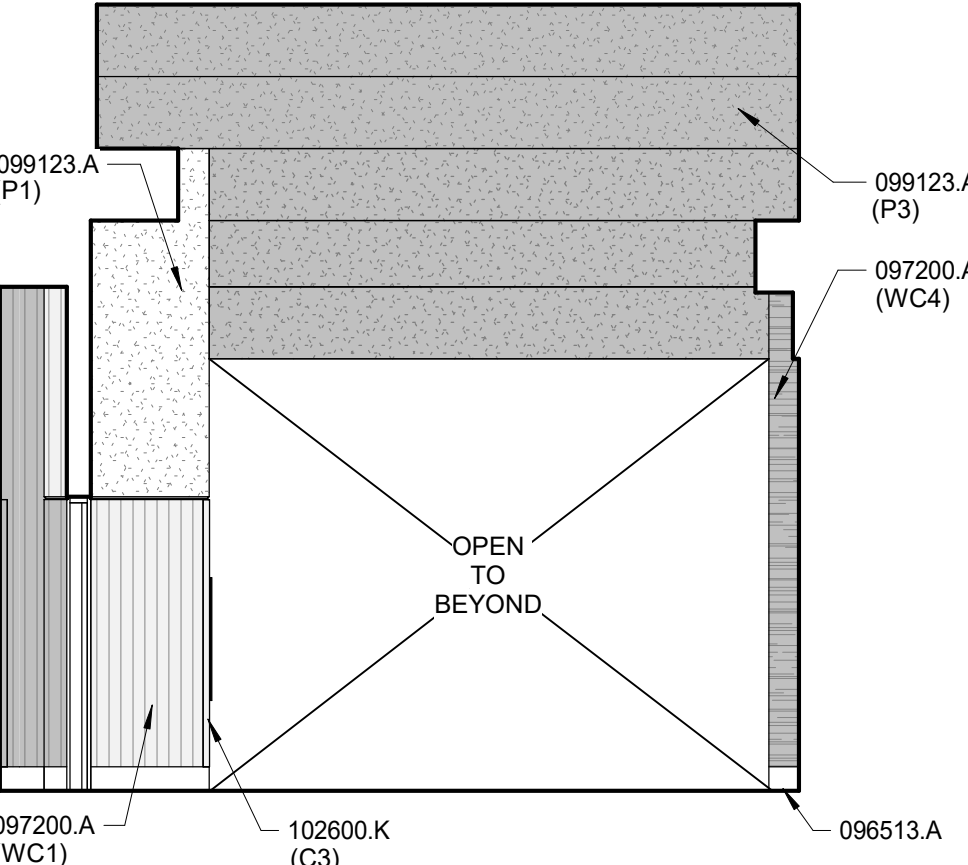
**D2 HALL 113 - N**  
3/16" = 1'-0" (TYPICAL)



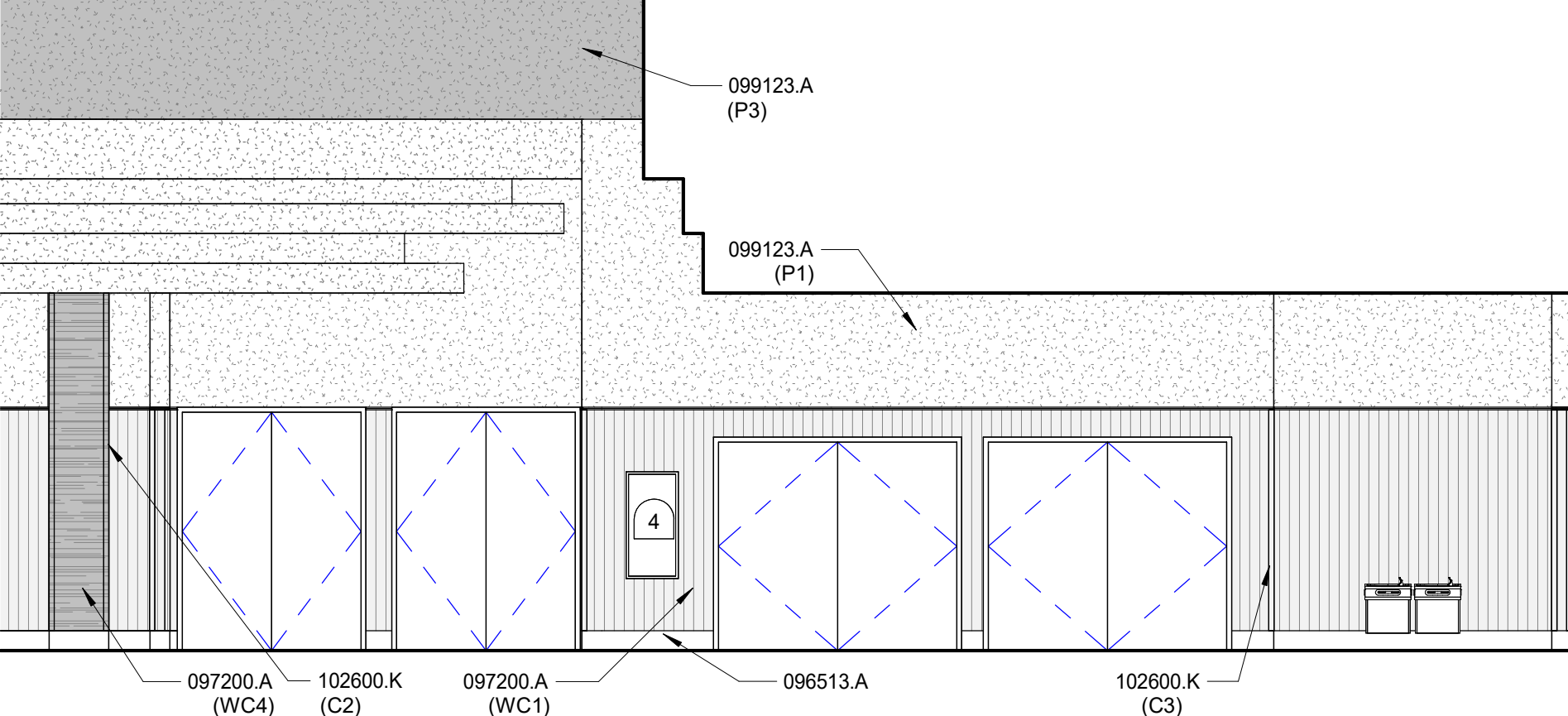
**E1 LOBBY 119 - N**  
3/16" = 1'-0"



**E3 LOBBY 119 - W**  
3/16" = 1'-0" (TYPICAL)



**E4 LOBBY 119 - S**  
3/16" = 1'-0"



**E5 HALL 115 - E**  
3/16" = 1'-0"

**INTERIOR ELEVATION NOTES**

1. REFER TO GENERAL NOTES ON FLOOR PLAN SHEETS FOR GENERAL FLOOR PLAN NOTES WHICH APPLY HERE.
2. REFERENCE ROOM FINISH SCHEDULE AND FINISH LEGEND FOR ADDITIONAL MATERIALS AND FINISH INFORMATION.
3. FOR SYMBOLS AND ABBREVIATIONS SEE COVER SHEET 0.00.
4. ALL WALLS NOT INDICATED BY A HATCH PATTERN ARE PAINTED GYPSUM WALL BOARD U.O.N.
5. P# = PAINT. REFER TO SPECIFICATIONS FOR TYPES. SEE ROOM FINISH NOTES ON SHEET A2.1 FOR COLOR INFORMATION.

MARK	DATE	DESCRIPTION
1	7/25/2025	Revised 01

JOB NO.: 25009.01  
DATE: 07/16/2025  
DRAWN BY: JBA/V  
CHECKED BY: SB

PHASE: CONSTRUCTION  
100% DOCUMENTS

**INTERIOR  
ELEVATIONS -  
HALLWAYS**

SHEET NO.

**A6.2**